

ADE Data Conference - 2013



ARKANSAS
DEPARTMENT
OF EDUCATION

ENTERPRISE DATA SYSTEMS

Powering Tools. Delivering Data. Real-Time.

Research & Technology

Presented By: Arijit Sarkar & Reshmi Jose

Date: August 7, 2013



ENTERPRISE DATA SYSTEMS

SIS

STATEWIDE INFORMATION SYSTEM



ADE DATA CENTER



ADE STATE DATA WAREHOUSE

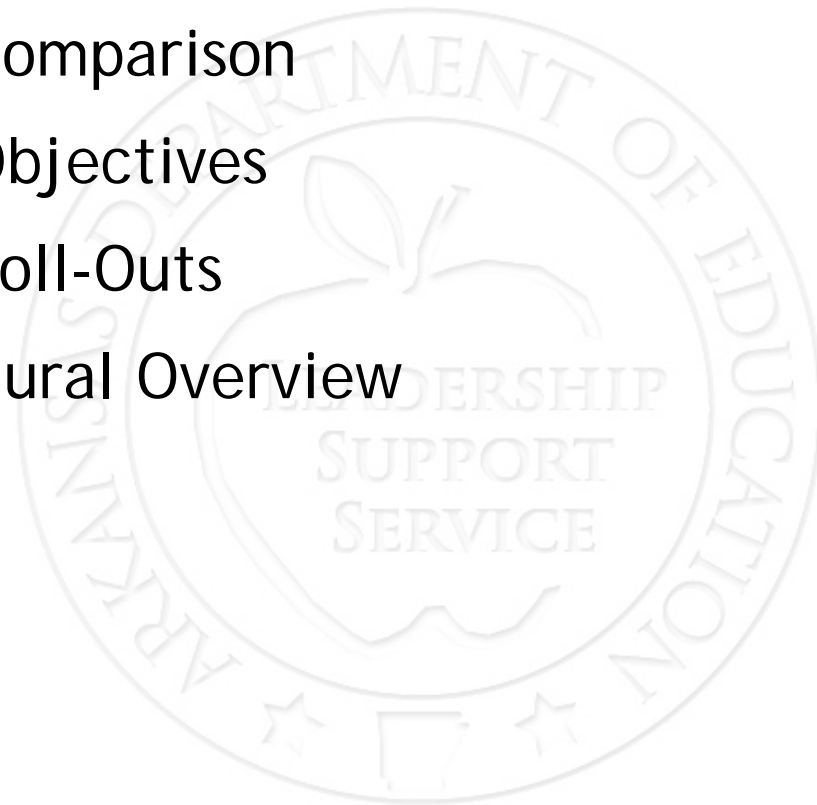
ITA

IT ARCHITECTURE



AGENDA – STATEWIDE INFORMATION SYSTEM (Web-Based)

- System Comparison
- System Objectives
- System Roll-Outs
- Architectural Overview
- Demo





STATEWIDE INFORMATION SYSTEM

PAST

- Legacy SIS
- Source Systems: StudentPlus and Finance Plus
- Data Nine Times/Year from School Districts
- Based on Informix and 4GL/Genero programs and coding standards
- Legacy Graphical Use Interface — No Mouse; Limited Interaction
- Process is time consuming, laborious and prone to data errors, may take 3+ hours/district
- Fax/Paper Resubmission Requests
- Districts "Pull" Data from Source Systems to State; errors are in the form of Phase O, 1, 2

CURRENT

- Web-Based SIS
- Source Systems: eschoolPlus and FinancePlus
- Data Collected Nightly and On-Demand
- Architected on modern Microsoft .NET and Microsoft SQL Server technologies
- Web-Based Graphical User Interface; Extremely User Friendly
- Real-Time Data Feeds and Status Monitoring possible
- Electronic Resubmissions
- Online "Warnings" and "Errors" alert Districts of Potential Data Quality Issues



WEB-BASED SIS OBJECTIVES

- Allows districts to update source systems
- Dynamically handle multiple source systems
 - StudentPlus
 - FinancePlus
 - eSchoolPlus
 - LEA Profile/SIS Global
- Process district data on a nightly basis
 - Every district will be processed.
 - Current cycle build process is automatic.
 - Multi-threading to meet processing window.
- Allow districts to view errors/warnings
- Allow districts to start manual build/validate/submit
- Allow districts to request a resubmission of a past cycle.



WEB-BASED SIS ROLL-OUTS

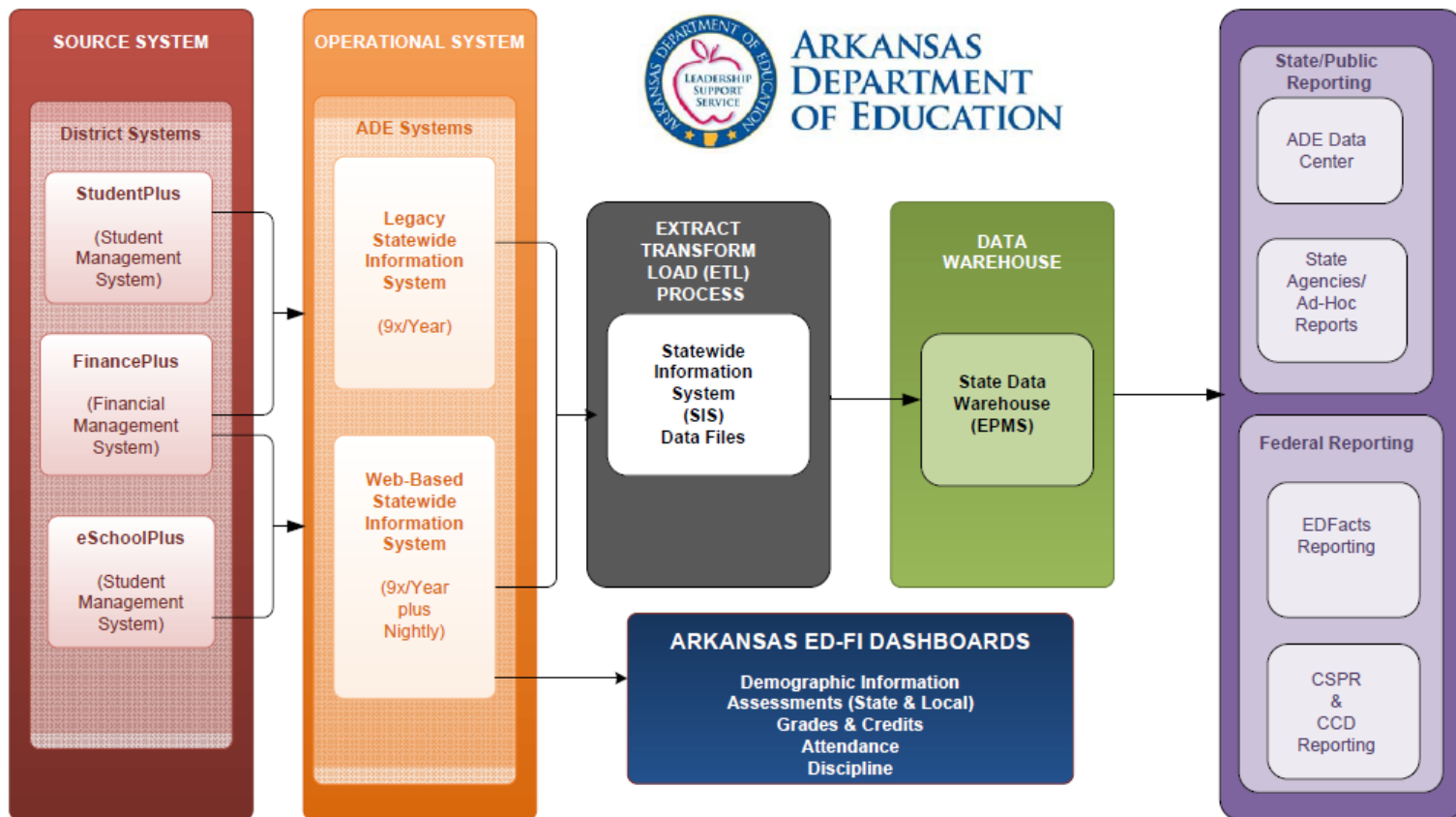
- The rolls-out for Web-Based SIS are in sync with eschoolPlus roll-out plans:

PHASE	SCHOOL YEAR	COUNT OF NEW SCHOOL DISTRICTS	CUMMMULATIVE DISTRICTS COUNTS
1	2011 - 2012	3	3
2	2012 - 2013	39	42
3	2013 - 2014	74	116
4	2014 - 2015	142	258

- Note: For SY 2013 - 2014, Web-Based SIS starts with Cycle 2 (October 1, 2013)




SMS-FMS & SIS: INFORMATION SYSTEM ARCHITECTURE





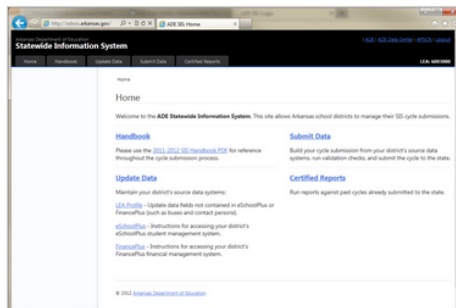
DEMO

- <https://adesis.arkansas.gov/>



Arkansas Department of Education
Statewide Information System

Research and Technology
Arkansas Department of Education
Four Capitol Mall
Little Rock, AR 72201
Phone: (501) 682-5157 Fax: (501) 683-3108
Email: ADESIS.Programmers@arkansas.gov



Statewide Information System

<https://adesis.arkansas.gov>

The Statewide Information System (SIS) is a web-based system developed by the Arkansas Department of Education's Research and Technology Division to enable school districts to submit and certify data to the State. The system will be used by school districts using eSchoolPlus software. The system has the capability to pull data from various source systems like StudentPlus/eSchoolPlus and, FinancePlus districts pertaining to Student Management System (SMS) and Financial Management System (FMS) on a nightly as well as on-demand basis as required by school districts. The SIS Cycle Submission process was developed to replace an existing system through which districts reviewed summarized financial and student information before submitting and certifying the data to the State.

Web-Based SIS Resources:

[SIS Cycle Instructions for Web-Based System](#)
[Page 3637 Instructions for Web-Based System](#)

SIS Manual

- [SIS Manual 2012-2013](#)
- [SIS Manual 2012-2013 Addendum \(last updated 07.17.12\)](#)
- [SIS Manual 2013-2014](#)

SIS Cycle Submission Forms



IMPORTANT CONTACTS

WEB-LINKS

- ADE SIS Launch Pad - <https://adedata.arkansas.gov/sis/>
- ADE SIS Website - <https://adesis.arkansas.gov/>
- Access - <https://adedata.arkansas.gov/security/>

(Download and Submit/Fax Cycle Coordinator - Web-Based SIS form to ADE)

E-MAILS

- ADE SIS Support E-mail: ADESIS.Programmers@Arkansas.Gov
- Arijit Sarkar, ADE Special Projects Coordinator
- E-mail: Arijit.Sarkar@Arkansas.Gov
- Reshmi Jose, ADE APSCN Division Manager
- Email: Reshmi.Jose@Arkansas.Gov



ARKANSAS DEPARTMENT OF EDUCATION

ENTERPRISE DATA SYSTEMS

Powering Tools. Delivering Data. Real-Time.